

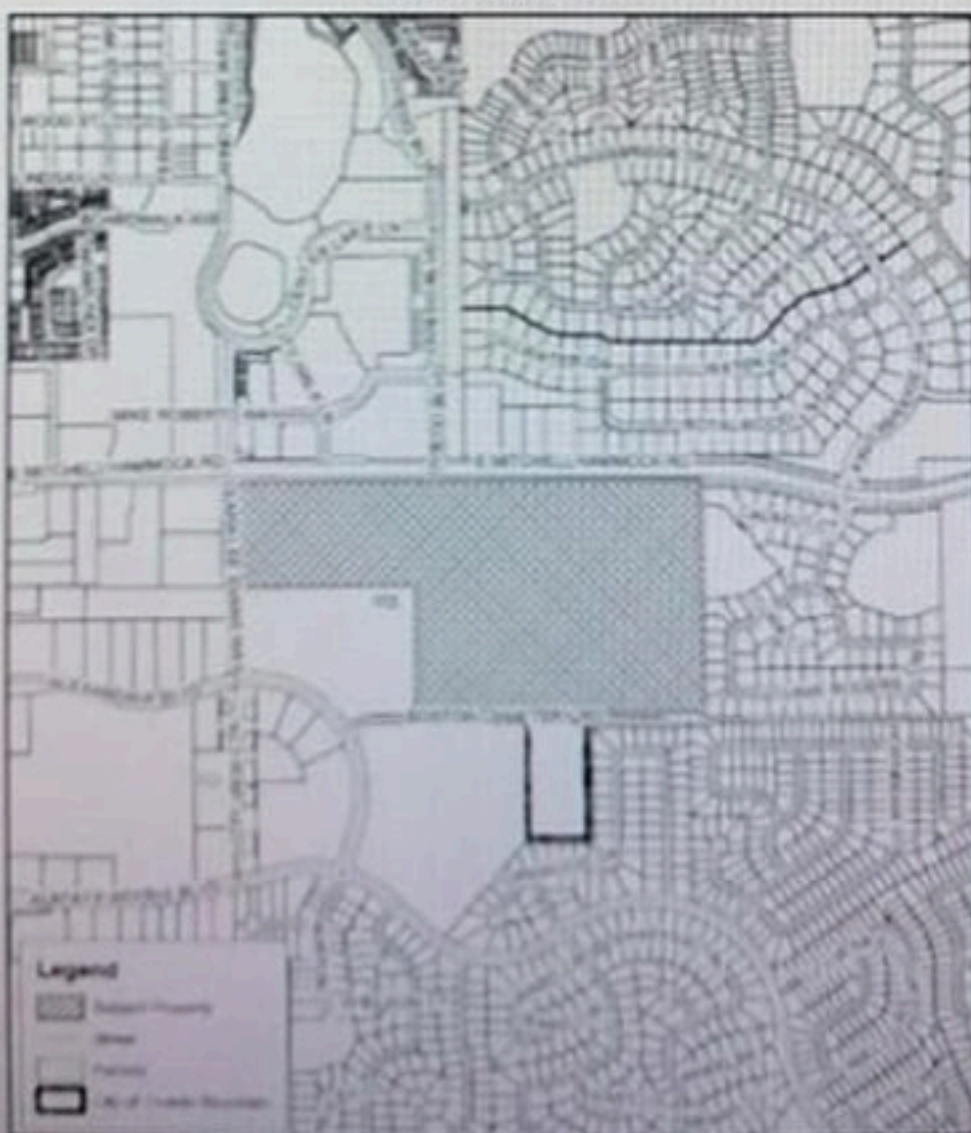
COMPREHENSIVE PLAN AMENDMENT CITY OF OVIEDO, FLORIDA

The City of Oviedo City Council will be considering the following ordinance:

ORDINANCE NO. 1682

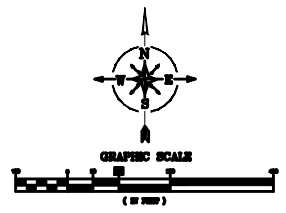
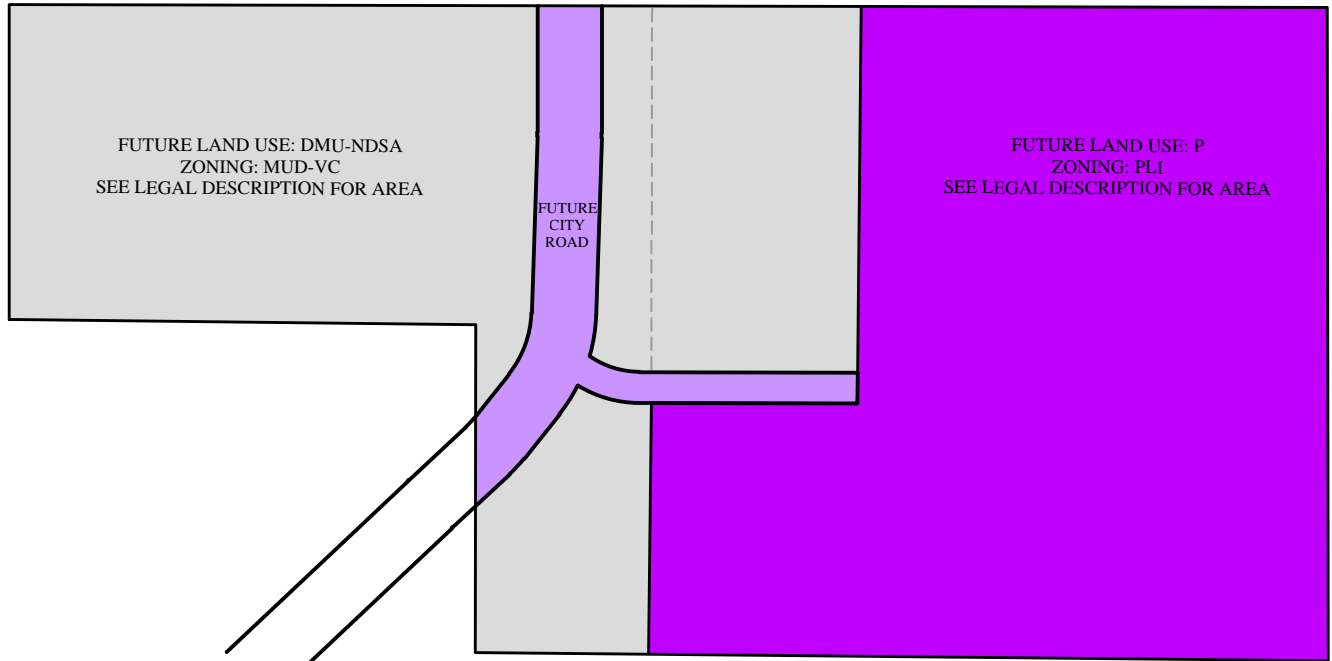
AN ORDINANCE OF THE CITY OF OVIEDO, FLORIDA, AMENDING THE FUTURE LAND USE MAP OF APPROXIMATELY SIXTY-ONE POINT TWENTY-FOUR (61.24) ACRES OF LAND GENERALLY LOCATED SOUTH OF MITCHELL HAMMOCK ROAD AND EAST OF CLARA LEE EVANS WAY AS FOLLOWS APPROXIMATELY TWENTY-THREE POINT ZERO TWO (23.02) ACRES FROM DOWNTOWN MIXED USE-SOUTH OF MITCHELL SUB-AREA (DMU) TO DOWNTOWN MIXED USE – NEW DOWNTOWN SUB-AREA (DMU), APPROXIMATELY SIX POINT EIGHTY (6.80) ACRES FROM RURAL (R) TO DOWNTOWN MIXED USE – NEW DOWNTOWN SUB-AREA (DMU), AND APPROXIMATELY THIRTY-ONE POINT FORTY-TWO (31.42) ACRES FROM RURAL (R) TO PUBLIC (P); PROVIDING FOR LEGISLATIVE INTENT, IMPLEMENTING ACTIONS, A SAVINGS PROVISION, CORRECTION OF SCRIVENER'S ERRORS, CONFLICTS, AND SEVERABILITY; AND PROVIDING FOR AN EFFECTIVE DATE.

LOCATION MAP



A public hearing will be held on Monday, September 16, 2019, before the City of Oviedo City Council beginning at 6:30 PM. The public hearing will be held in the City of Oviedo City Council Chambers, 400 Alexandria Boulevard.

HARRIS
 Hark O'Brien Engineers, LLC
 1300 E. Hill Street
 Suite 300
 Orlando, Florida 32809
 Phone: (407) 639-4777
 Fax: (407) 639-7666
 www.harrisobrien.com
 03/2014



This plan may have been reduced in size. Verify before scaling dimensions

Orlando Mixed-Use
Orlando, Florida

Revisions

No.	Date	Description

PROPOSED MAP
 Scale AS NOTED
 Date
 Project No. 200808

Design: CB
 Drawn: BU
 Checked: JK

EX-1